

BBP AG
Bahnhofstrasse 28
CH-5401 Baden
Switzerland

T: +41 56 203 9630
F: +41 56 203 9696
www.bbp.ch

SWIFT ServiceBureau

Solution

BBP offers a simple, fast and inexpensive SWIFTNet connection to financial institutions and corporates via the ServiceBureau. As a SWIFT participant via the BBP ServiceBureau, our clients benefit directly from all SWIFTNet functions. They appear independently with their own BIC code in the SWIFT network, while benefiting from the efficiencies of a shared system environment.

ServiceBureau - The Economical Outsourcing Solution

A SWIFT participant is connected to the BBP ServiceBureau via a VPN tunnel over the Internet. The customer installation is limited to a SWIFT User Interface (Java client) to access the ServiceBureau system for manual message processing and monitoring. For STP message flow, a set of various interfaces are available.

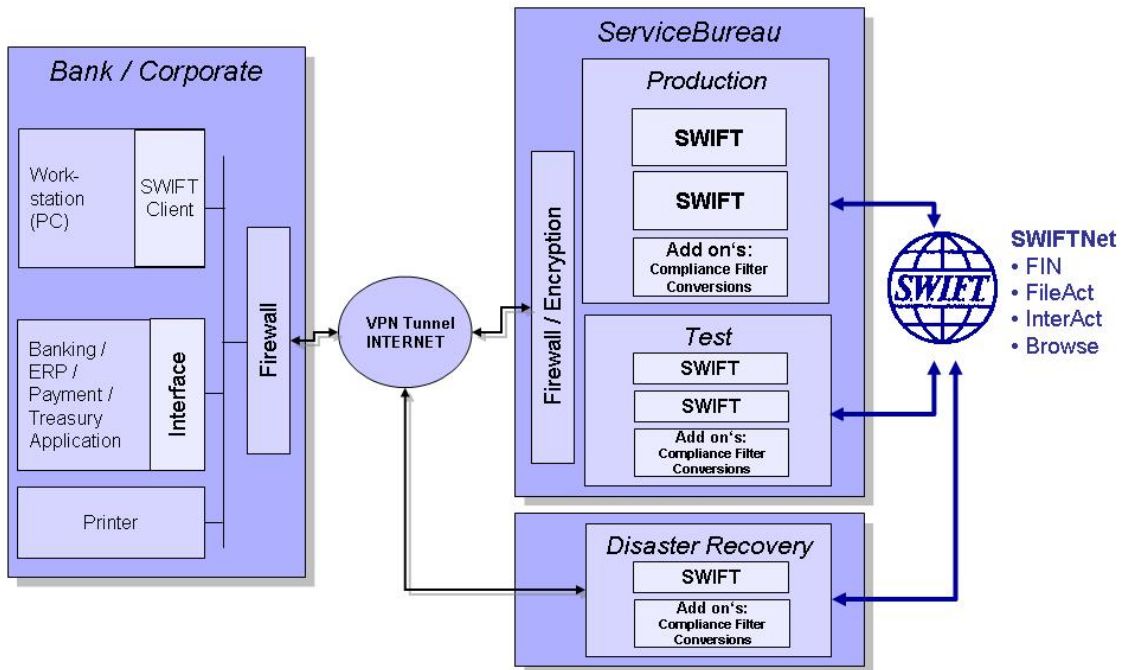


Illustration 1: SWIFT Service Bureau Overview

SWIFTNet Messaging Services

The ServiceBureau offers the full range of SWIFTNet Messaging Services, i.e.

- SWIFTNet FIN
- SWIFTNet FileAct
- SWIFTNet InterAct
- SWIFTNet Browse
- SWIFTNet FIN Inform
- SWIFTNet FIN Copy

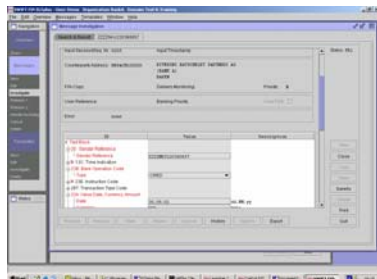
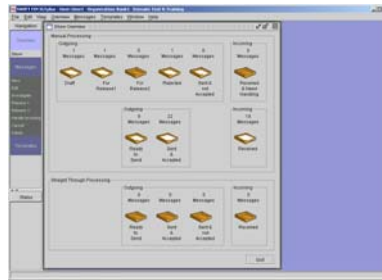
With this set of messaging services we can support all communication needs required for the various SWIFT Solutions like Accord, Cash Reporting, E&I, etc.

SWIFT IGTplus

BBP's own user friendly and high performance SWIFT interface, SWIFT IGTplus, is officially certified by S.W.I.F.T. s.c.

Message Flow at a glance:

Message flow can be controlled in a single window. Users can control all queues and drill down by «double-clicking» onto the baskets to see message details.



State-of-the-art SWIFT user Interface:

Graphical user Interface for manual message entry, repair, validation and inquiries. The GUI is JAVA based with an efficient communication minimizing data traffic between client and server. (Optimized for small bandwidth communication.)

High End Functionality

SB participants have the full SWIFT functionality of a high-end product at their disposal. All message types and inquiry modes as well as multi-user capability are supported.

The ServiceBureau offers a full range of interfaces (e.g. MQ-Series, FTP, online API, ...) to connect any application for « straight through processing ».

BBP ServiceBureau Handles Operation

The main advantage of the SB solution lies in the take-over of operations. BBP handles any technical problems, the introduction of new releases, daily administration of the communication lines, operation of authentication devices as well as carrying out and monitoring backups.

Help Desk

New SB participants are thoroughly trained in the SWIFT application, which guarantees trouble-free processing. The help desk, staffed with competent specialists, is available free of charge.

Highest Security and Continuous Availability

The system is located in the high security zone of the computing centre at Telekurs. Operation is almost fully automatic. All audit-related data is recorded and archived on tape at Telekurs.

Multi-step barriers and encryption protect access to the interbank applications by the participating banks. Each bank handles its own designated security area.

In addition to the productive environment, we operate a RecoveryCenter, which is a copy of the productive system in a separate premises from the computing centre. The aim of this alternate system is to guarantee continuous availability of the interbank connection.

Quality and Continuity through Auditing and Certification

The availability and security as well as the operation of the SB are audited annually in accordance to the guidelines of the Swiss Federal Banking Commission.

Furthermore, SWIFT conducts regularly its own audit and confirms that meets all requirements necessary to operate a SWIFT Service Bureau.

The BBP ServiceBureau completely fulfills requirements set down by the S.W.I.F.T. ServiceBureau Policy and is officially approved by S.W.I.F.T..

References

BBP serves over 150 clients. All of them are using the IGT InterbankGateway software either as inhouse solutions (i.e. the systems are operated by the customer) or via the BBP ServiceBureau (outsourcing solution).

Inhouse sector: Currently around 50 installations at approx. 30 banks and computer centers, serving over 350 banks. (Customers include UBS, ZKB, Swiss National Bank, ...)

BBP ServiceBureau: More than 120 customers from over 20 countries. Customers include Financial Institutions, Corporates and ACH's. (Among them Nomura, Dresdner Bank, Barclays Bank, Hydro, Swiss Re, EBA, BGC)

For more information please refer to our client list.

BBP AG - Swiss Specialist for Interbank Applications

BBP AG, located in Switzerland, Baden, has been specializing in the field of integration of interbank applications since 1986. Since 1999 is a fully owned subsidiary of Fundtech Corporation, Jersey City, USA.

BBP has been operating the first independent ServiceBureau (SB) in Switzerland since 1995. Today, with more than 110 BIC codes from over 20 countries, the ServiceBureau counts as the world biggest SWIFT ServiceBureau.

Main Benefits

- SWIFT certified IGT plus client interface;
- Significantly reduced operational activities and no maintenance work;
- Low risk migration project, BBP's experience in managing SWIFT projects guarantees a fast, smooth and on time project.
- Test & coordination of all SWIFT SW upgrades;
- Highest system security and availability, fully automatic operation;
- The Bank will join the most experienced SWIFT outsourcing provider and World largest SWIFT ServiceBureau;
- Improved and cheaper connectivity through secure VPN;
- Helpdesk support by multi lenglual SWIFT experts;
- Clearly defined and measured Service Level Agreement;
- Outsourcing of non-strategic operations;
- Lower overall Costs (ServiceBureau vs. In-house systems)

Version: 1.0_E_ML

Version date: 01.10.2007

Disclaimer: BBP supplies this publication for information purposes only. The information in this publication is subject to change. Please make sure that you always refer to the latest available version.